

ShipRite Slowdown after Windows Update

A recent Windows update which affects the Microsoft Security Essentials and Windows Defender programs has in some instances caused the functioning of ShipRite to slow down significantly. They are essentially the same program, just named differently depending on your operating system.

If the operation of your ShipRite program suddenly slowed down significantly, then follow these instructions to remedy.

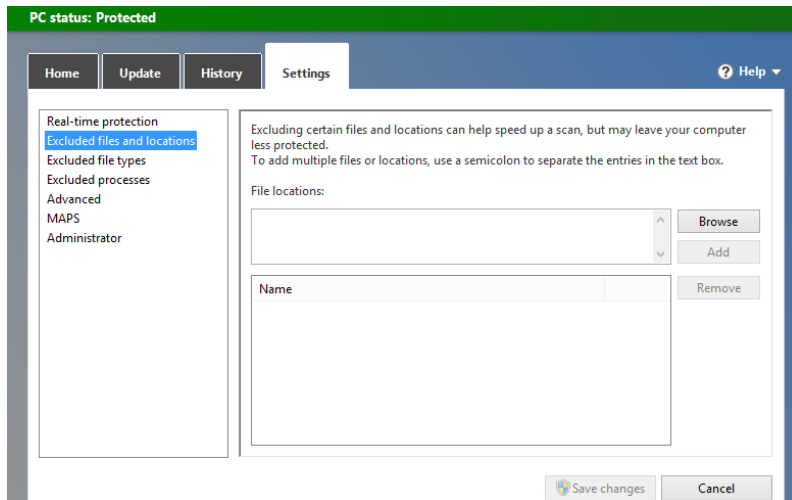
The easiest way to access those programs is from your windows taskbar. Look for one the following icon in the system tray next to the Date and Time. Depending on your system it can be green, blue, yellow or red.



If you don't see the icon, then you will have to manually open the program. Click on the windows start menu and in the search field type in: **Microsoft Security Essentials**

If no results are displayed, try typing in: **Windows Defender**

Click on the program to open. Once Microsoft Security Essentials is open click on the Settings tab and select Excluded Files and Locations.



Click on the browse option and browse to the C:\shiprite folder. Click Open. Now click the ADD button to add the C:\shiprite folder to the excluded list.

If this is not working out, you can alternatively click on the “real-time protection” option and turn OFF the real time protection. This also stops any interference with ShipRite but will completely disable the security function of the Security Essentials software.

Once ShipRite is either excluded or real time protection is disabled, the delays and slowdowns within the ShipRite software will immediately stop.